



MONTHLY MEMBERSHIP PROGRESS REPORT

District 30 M

Results as of: 2/28/2017

GMT: HARVEY WHITLEY

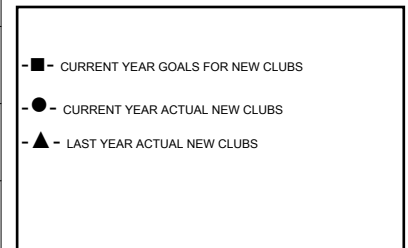
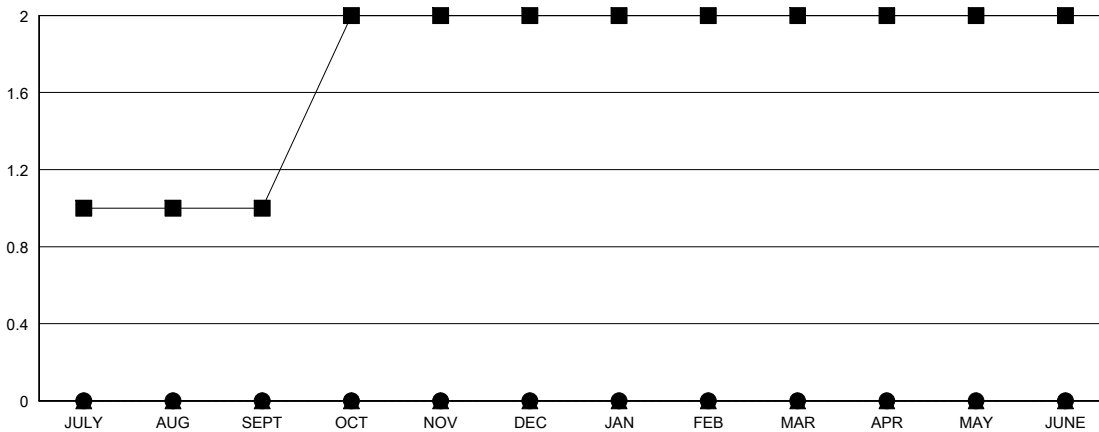
LOCATION MISSISSIPPI

GMT CA

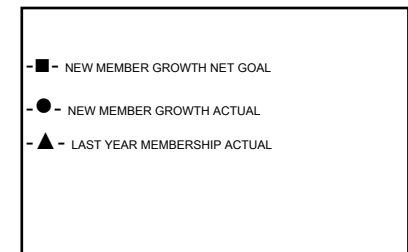
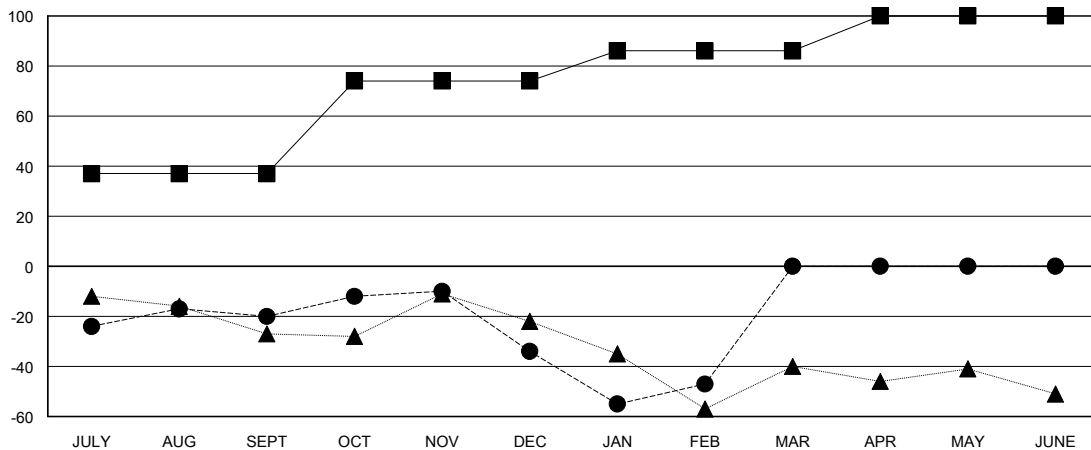
Clubs			
RESULTS FOR 2016-2017			
QUARTER	NEW CLUB GOAL	NEW CLUBS	DROPPED CLUBS
JULY/AUG/SEPT	1	0	0
OCT/NOV/DEC	1	0	1
JAN/FEB/MAR	0	0	0
APR/MAY/JUNE	0	0	0

Members			
RESULTS FOR 2016-2017			
QUARTER	NEW MEMBER GROWTH NET GOAL (not reinstated or transfers)	NEW MEMBER GROWTH ACTUAL (not reinstated or transfers)	DROPPED MEMBERS ACTUAL (including transfers)
JULY/AUG/SEPT	37	25	45
OCT/NOV/DEC	37	17	31
JAN/FEB/MAR	12	14	27
APR/MAY/JUNE	14	0	0

GOALS AND ACTUAL NEW CLUBS CUMULATIVE



GOALS AND ACTUAL MEMBERS CUMULATIVE



DROPPED CLUBS: 1	24 CLUBS OF 54 ADDED 1 OR MORE NEW MEMBERS	<u>GENDER DISTRIBUTION</u>	
DROPPED MEMBERS		MALE	810 (73.91%)
DECEASED 8	CLICK HERE FOR CUMULATIVE MEMBERSHIP DATA	FEMALE	286 (26.09%)
CLUB CANCELLED 9		TOTAL FAMILY UNIT MEMBERS	197
OTHER 86		FAMILY MEMBERS PAYING HALF DUES	100
TOTAL 103			